

Cypress 38



Measurements

Home Dimensions

Upper Floor Area	136.9sq/m
Lower Floor Area	137.7sq/m
Garage Area	40.6sq/m
Outdoor Living Area	31.4sq/m
Balcony Area	8.8sq/m
Total Area	355.4sq/m

House Length	12.49m
House Width	15.77m
Min. Block Width	20.0m

Room Dimensions

Living	5810 x 4210mm
Meals	4010 x 3010mm
Lounge	3310 x 4110mm
Upstairs Living	5210 x 3300mm
Bedroom 1	4320 x 4120mm
Bedroom 2	3210 x 3010mm
Bedroom 3	3210 x 3210mm
Bedroom 4	3610 x 3110mm
Bedroom 5	3710 x 3410mm
Garage	6010 x 6010mm
Outdoor Living	6100 x 4500mm

Your home, your way...

For this, and many other stylish design options, visit rockfordhomes.com.au or contact one of our Sales Consultants today.

John Pearce 0402 439 007

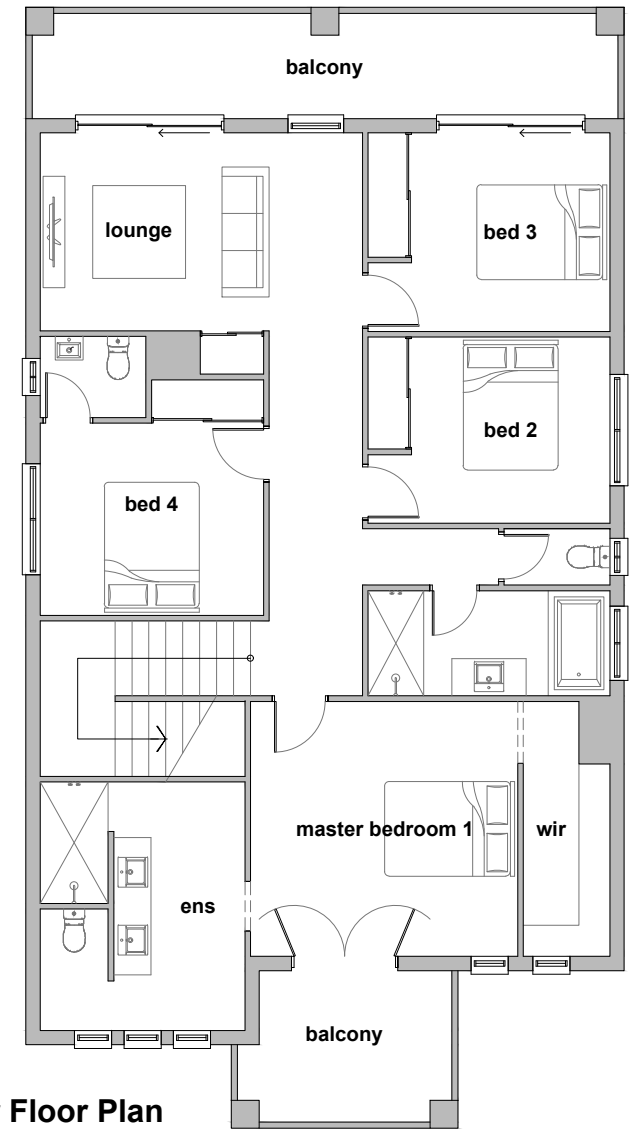
Pat Catalano 0473 439 000

Office 08 8595 1092

Photographs in this brochure may depict fixtures, finishes and features not supplied by Rockford Homes such as landscaping and swimming pools. Accordingly, any prices in this brochure do not include the supply of any of these items. For detailed home pricing, please talk to a sales consultant. For these and any other home design changes you may have in mind see your New Home Advisor



Ground Floor Plan



Upper Floor Plan

For this, and many other stylish design options, visit rockfordhomes.com.au or contact one of our Sales Consultants today.

John Pearce 0402 439 007

Pat Catalano 0473 439 000

Office 08 8595 1092

Photographs in this brochure may depict fixtures, finishes and features not supplied by Rockford Homes such as landscaping and swimming pools. Accordingly, any prices in this brochure do not include the supply of any of these items. For detailed home pricing, please talk to a sales consultant. For these and any other home design changes you may have in mind see your New Home Advisor